

Restored to Jesus Christ

Come, Rejoice and Guide Us, O Thou Great Jehovah

Original Tracy L. Cannon, John Hughes

Arr. Michelle Hylton

Please take note of where rests are and are not, and make musical choices accordingly. Also CYOD: choose your own dynamics :)

Measures 1-8 of the piano arrangement. The key signature is one sharp (F#) and the time signature is 4/4. The music features a melody in the right hand and a bass line in the left hand. Dynamics include *p* (piano) and *mf* (mezzo-forte). A fermata is placed over the first measure of the right hand in measure 4.

9

Measures 9-12 of the piano arrangement. The melody continues in the right hand, and the bass line provides harmonic support. The music concludes with a whole note chord in the right hand in measure 12.

13

Measures 13-16 of the piano arrangement. The melody in the right hand consists of quarter and eighth notes. The bass line features a steady eighth-note accompaniment.

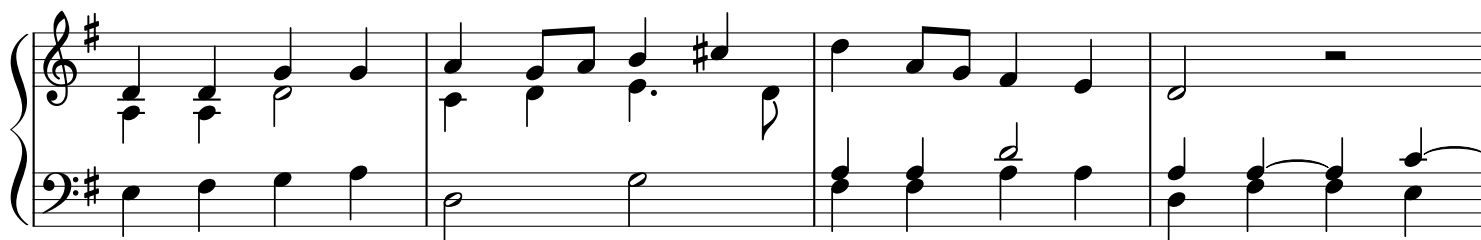
17

Measures 17-21 of the piano arrangement. The melody in the right hand includes a dotted quarter note and a half note. The bass line continues with eighth-note accompaniment.

22

Measures 22-25 of the piano arrangement. The melody in the right hand features a dotted quarter note and a half note. The bass line continues with eighth-note accompaniment.

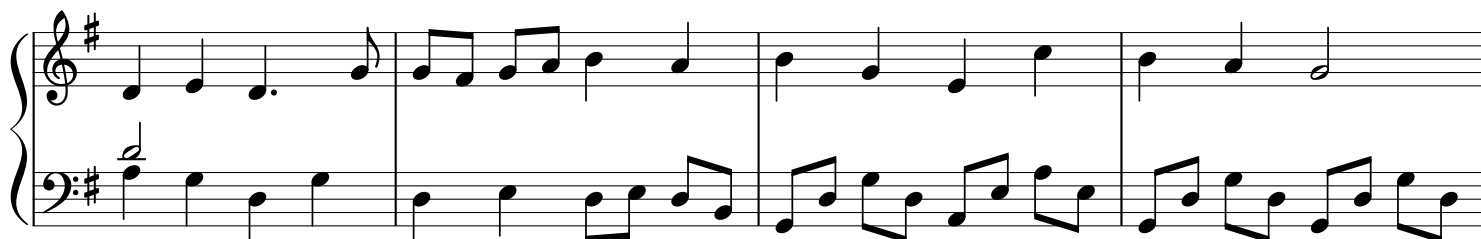
26



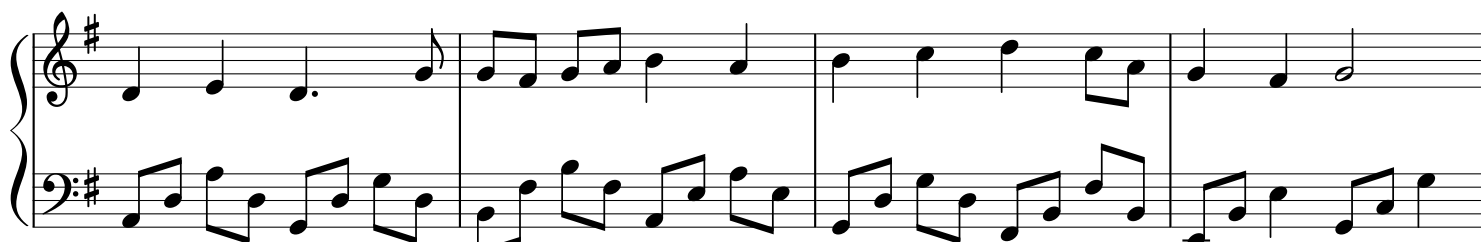
30



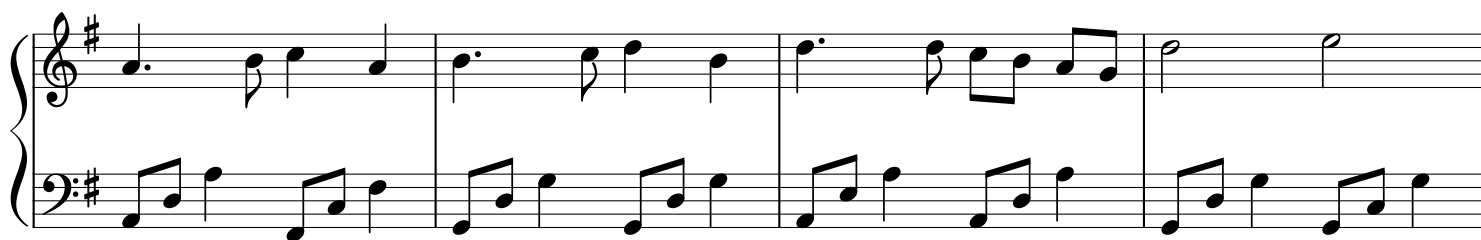
34



38



42



46

rit. *broadly*

50

54

echo

58

62

*let sound die
before taking hands off*

(long fermata)